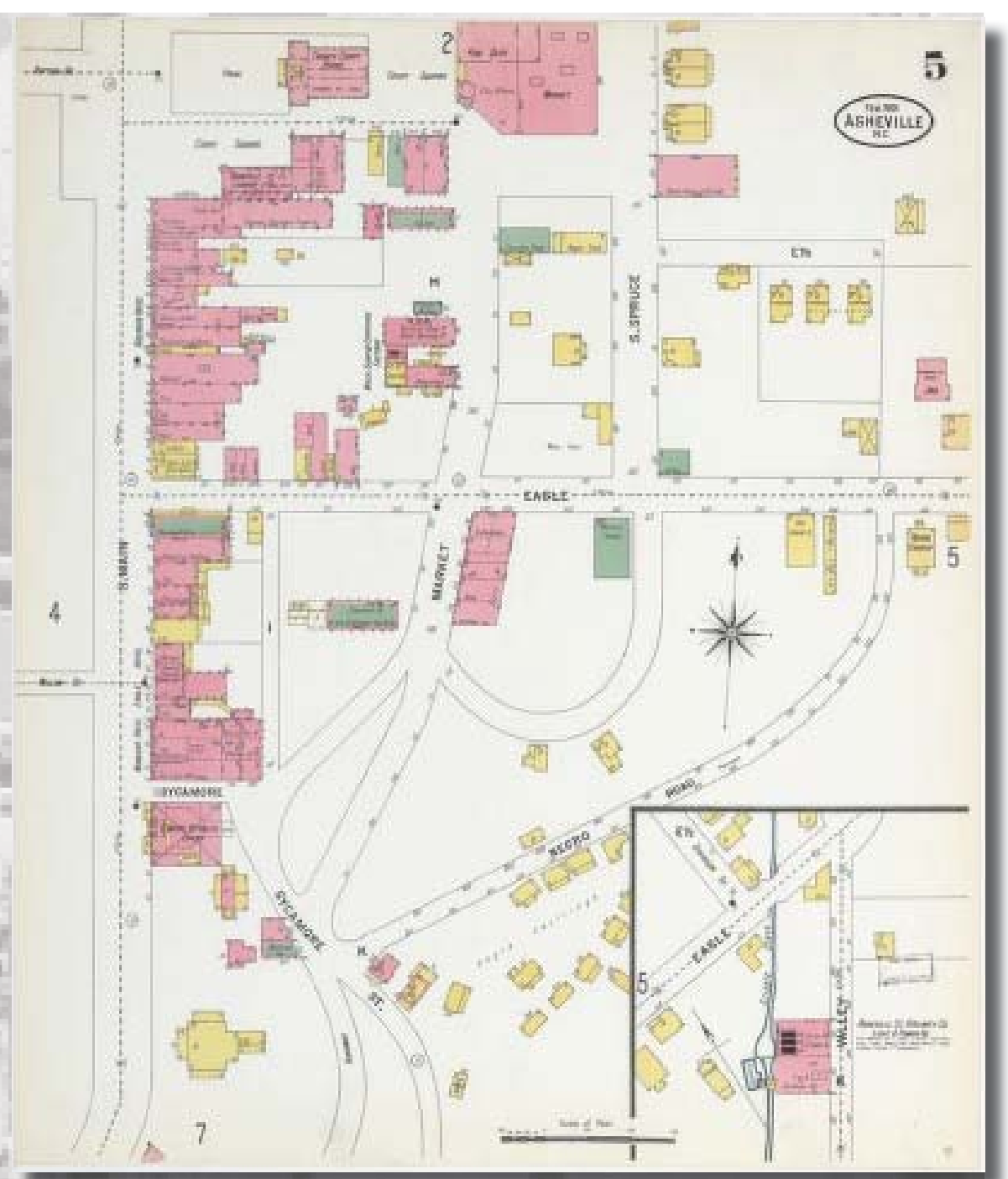
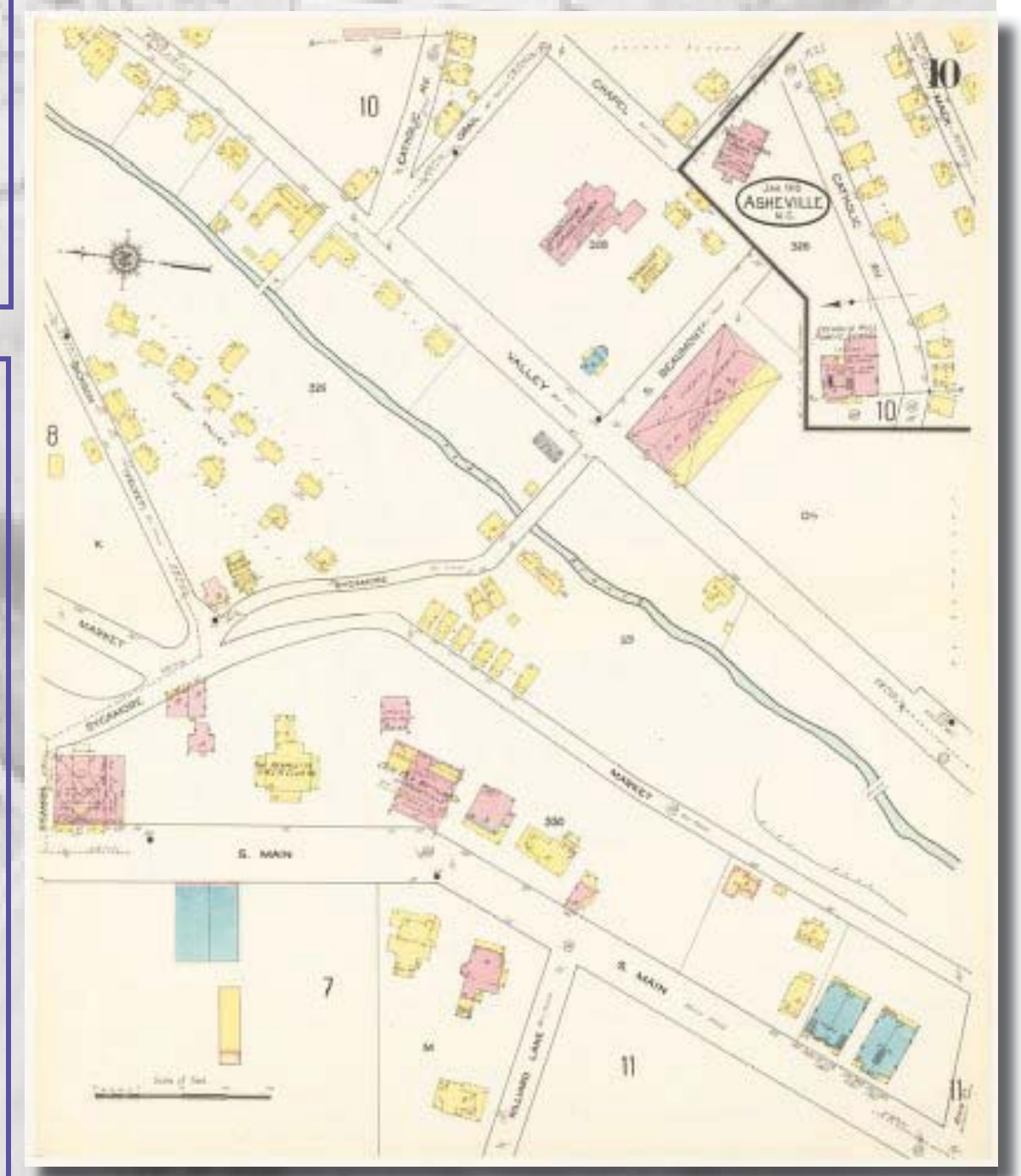


# THE BLOCK IN TIME

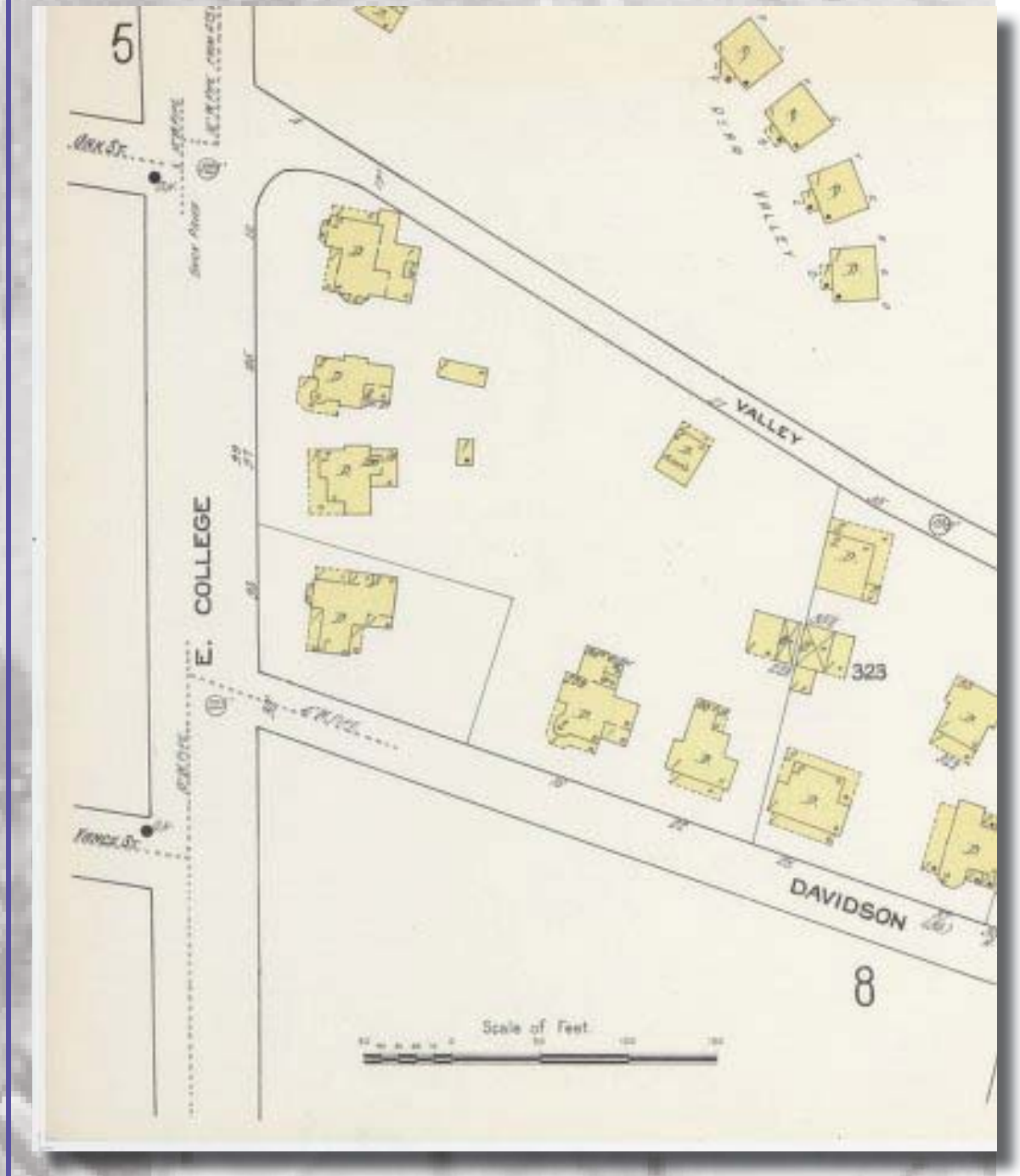
- 1800 ● 1800 – The Block is a Village with 38 white settlers, 13 African-American slaves
- 1820 ●
- 1840 ● Pre Civil War – Eagle Hotel Built near Biltmore Ave, using African Americans who lived nearby in The Block
- Houses were built on the former Velvet Street for slaves working on the construction of the “Henrietta” Estate located along Biltmore Avenue
- 1860 ●
- 1880 ● 1800 - Mt. Zion Missionary Baptist Church is founded on Eagle Street
- 1886 - Isaac Dickson, an African-American business man and educator, purchased slave homes used for the construction of the “Henrietta” Estate and rented them to local community members
- 1891 - Edward S. Stephens approaches George W. Vanderbilt with a business proposal for creating a community space in the model of the YMCA
- 1893 - George Vanderbilt invests \$32,000.00 for the creation of the Young Men’s Institute (YMI). This offers retail and educational spaces for the growing community. The YMI becomes the cornerstone of culture and self-sufficiency. This time up to the Great Depression was a growing period for The Block
- 1900 ●
- 1919 - Mt. Zion Missionary Baptist Church is constructed on Eagle Street
- 1920 ●
- 1929 - The Great Depression affects The Block particularly hard due to its economic base in the service industry
- 1940 ● 1930 - 1950 - The Block was somewhat blighted from the Great Depression, however the community began to thrive once again as a sense of self-sufficiency dominated the community. This time brought a strong sense of community spirit and a lively scene to the neighborhood. Local nightclubs were popular in the neighborhood and offered a rich array of talent acts.
- 
- 1960 ● 1960 - Urban Renewal removed “blight” and largely destroyed The Block and East End Community. Once connected, South Charlotte Street replaced Valley Street and cut the neighborhoods in half. In addition, Velvet Street was removed and no longer was an integral internal connection.
- 
- 1980 ● 1980’s - The 1980’s signaled hard times for downtown Asheville. Many merchants and businesses left downtown for surrounding areas. This also spread through The Block where more buildings were boarded up and vacated.
- 1980’s - The YMI takes on the role as a Cultural Center and begins the process of major renovations
- 1993, 1996 – South Pack Square Redevelopment Plan created to address needs of The Block and surrounding neighborhood
- 2000 ●
- 2009 - Asheville adopts the Downtown Master Plan to develop the cultural, historical and creative character of downtown
- TODAY ● 2010 - The Block is being re-energized with development activities from YMI Cultural Center, Mt. Zion Missionary Baptist Church, Eagle Market Street Development Corporation, the Asheville Art Museum, the City of Asheville and other local business leaders.



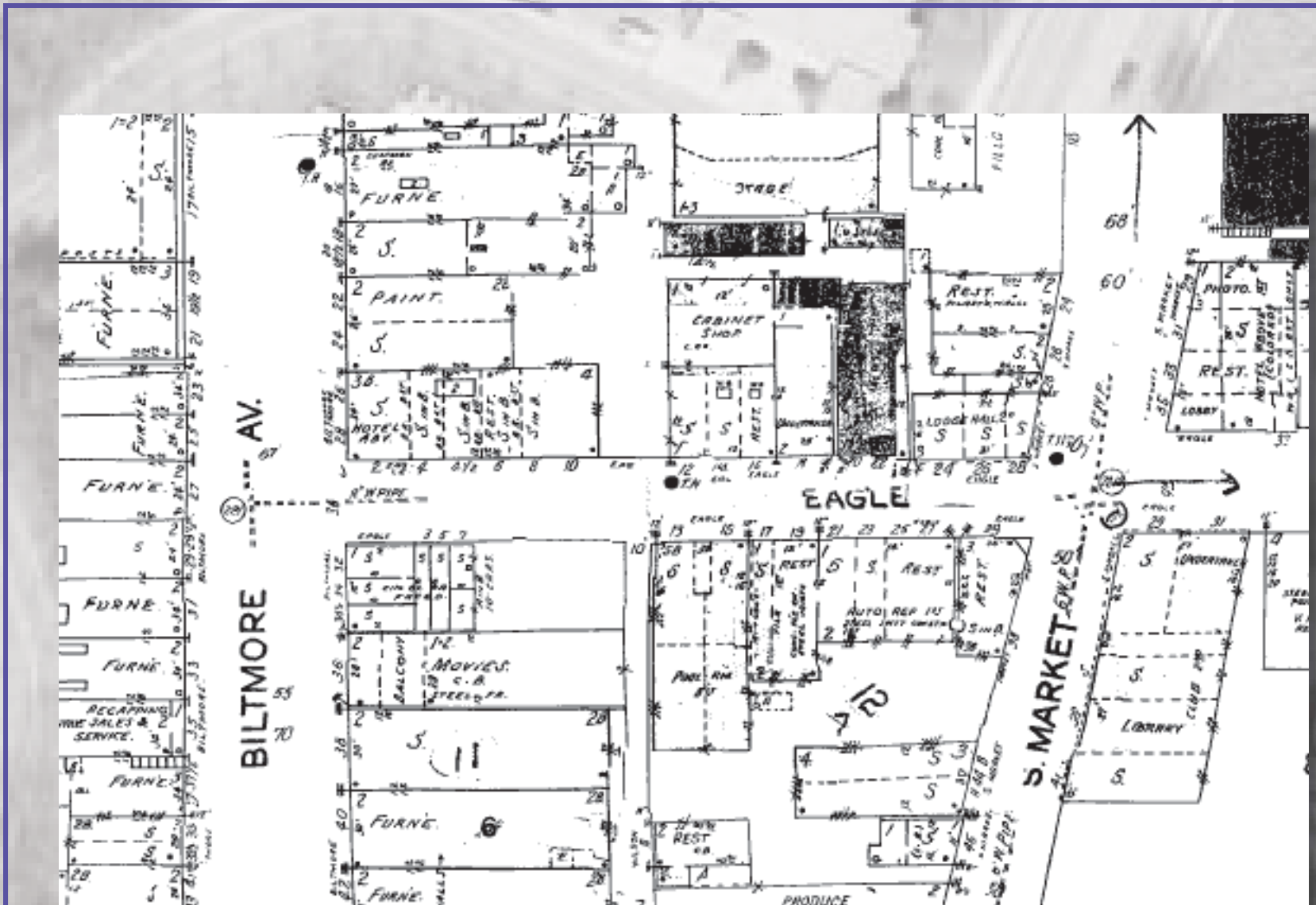
1901 - Sanborn



1913 - Sanborn



1913 - Sanborn



1925 - 1950 Sanborn

